



ENA

AGÊNCIA DE ENERGIA E AMBIENTE
DA ARRÁBIDA



MEMBERSHIP INFORMATION 2020

WHO WE ARE

ENA - Energy and Environment Agency of Arrábida is a not-for-profit association, created in June 2006 by initiative of the City Councils of Palmela, Setúbal and Sesimbra, in the scope of the European programme 'Intelligent Energy Europe' 2007-2013, together with AFLOPS, FIAPAL, C.D.R., Pluricoop and the Polytechnic Institute of Setúbal.

OUR MISSION

To promote energy efficiency, sustainability and environmental good practices in our territory, together with politicians, associative movement, business and civil society to bring the necessary change towards Sustainable Development.

OUR OBJECTIVES

ENA's work focuses on the creation and implementation of actions and projects in the areas of environment and energy, through efficient technologies, dissemination of good practices, project development, studies and advisory, training, information and consulting services.

OUR ACTIVITIES

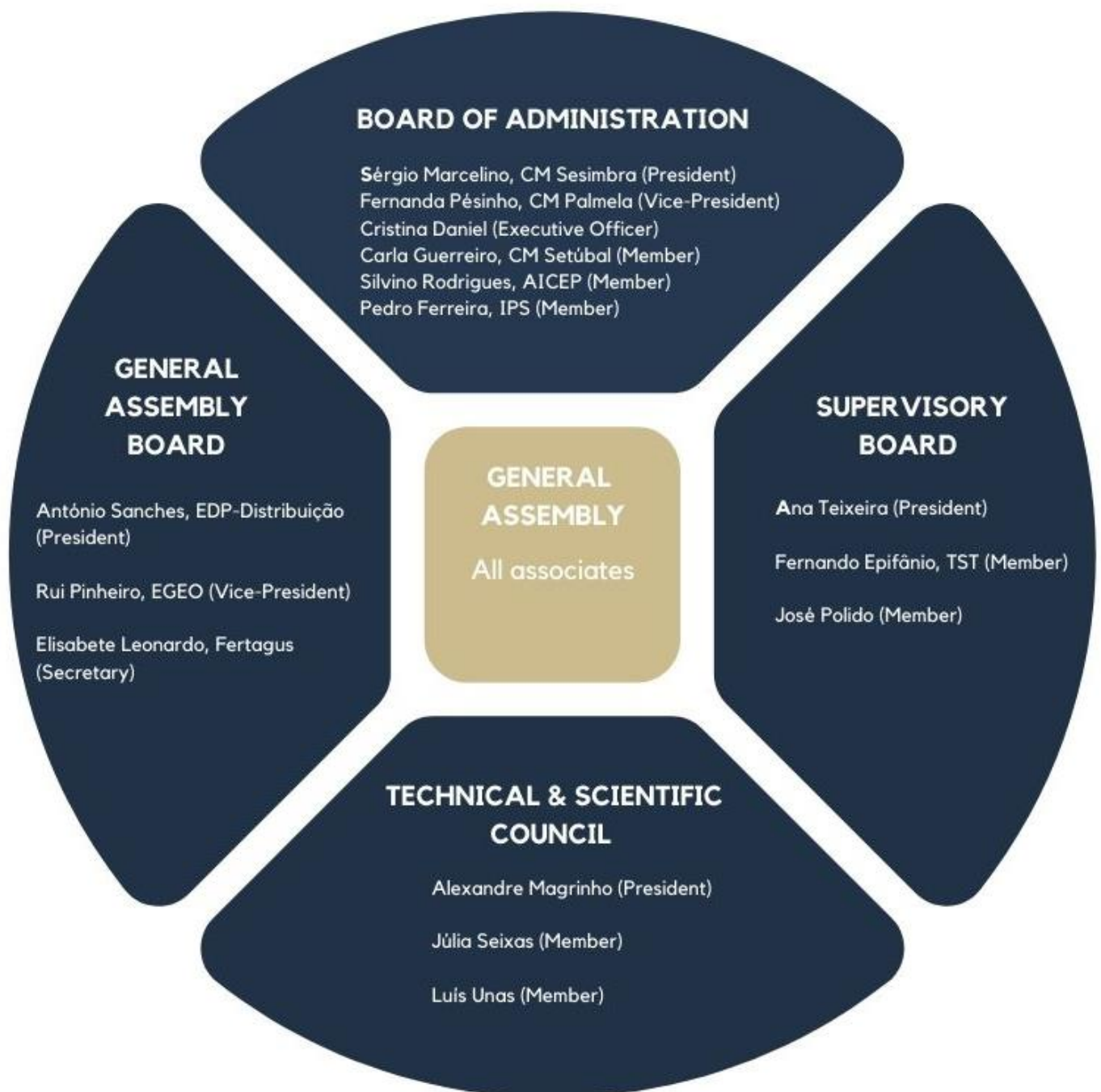
ENA involves its community at technical and behavioral levels through the implementation of specific actions and an increasingly systematic participation, focused on the continuous improvement of the region's energy, environmental and social performance aiming at:

- ❖ Carrying out actions to improve the community's energy and environmental performance, mostly directed to our associates, but also involving other actors;
- ❖ Technically supporting our associates in the implementation of methodologies and studies, namely by carrying out

- Energy audits at industrial, services and housing levels, applying Energy Management Systems at different levels (industry services and transport)
 - Environmental (ISO 14001) and energy management (ISO 50001) systems
 - Technical and economic studies and analyses concerning energy production and consumption equipment, seeking the best financing strategies
 - Analysis of energy supply contracts
 - Energy projects
 - Environmental impact studies
 - Environmental issues assessment
 - Environmental and energy sustainability plans
 - Strategies to ensure the correct disposal of waste
-
- ❖ Informing on Energy Efficiency principles, Environmental Best Practices and Sustainable Development
 - ❖ Developing awareness raising actions, providing support and technical training
 - ❖ Setting up discussion and information exchange forums - workshops, debates, conferences
 - ❖ Developing contents to support school, social, business and political communities, in a medium-term strategy
 - ❖ Implementing projects and studies that support national and international strategies for climate change mitigation and adaptation
 - ❖ Cooperating with other National and European Agencies
 - ❖ Linking ENA's associated members with National and European support in the energy and environment areas, by submitting applications and carrying out financed projects

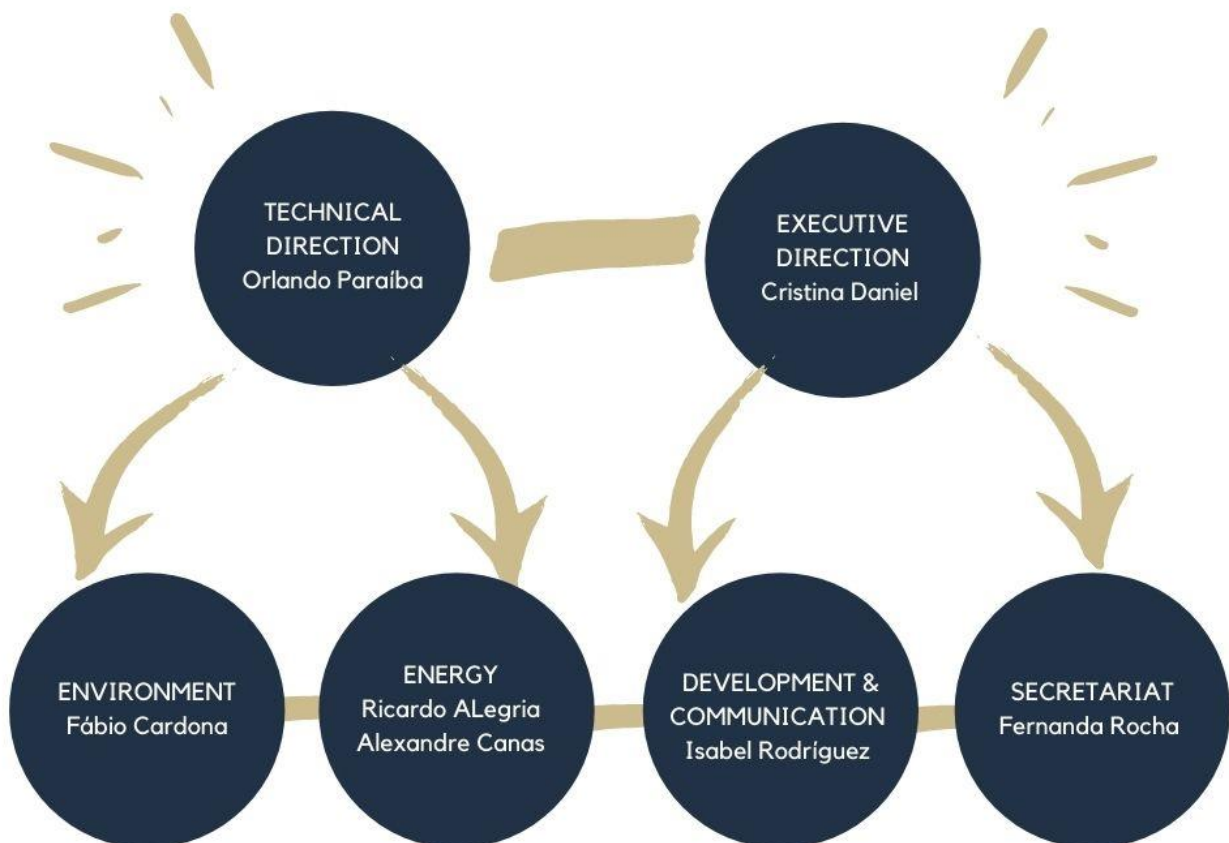
OUR STATUTORY BODIES

ENA's statutory bodies are the General Assembly, the Board of Administration, the Supervisory Board and the Scientific Council, with the following constitution for the period 2019-2022:



OUR TEAM

ENA's technical serves the community and consists of:



OUR SKILLS AND CAPACITIES

We invest in capacity building and training of our staff, in order to support our associates with adequate competences and skills, updating knowledge for the best performance in a differentiating and expanding market.

WE EXIST BECAUSE...

The world's governments act as one in fighting against Climate Change. The sustainable development of any nation today makes it imperative to comply with the Paris Agreement and European guidelines in order to achieve the global targets for reducing greenhouse gas (GHG) emissions that affect climate in an increasingly disturbing way.

Portugal has already announced the change of its energy matrix in order to reduce GHG emissions and reduce costs of external dependence on fossil fuels. These gains will only be possible with a high level of energy efficiency, the use of renewable energies and the economic, political and social commitment.

However, a change in habits will only be possible if each municipality, institution, company and citizen gets strongly involved with this new reality.

ENA is ready to support its new associated members to take a step forward and face environmental challenges with social responsibility.

BENEFITS FOR ASSOCIATES

By being ENA's associate, you save natural and financial resources, ensure the distinction of your company and its sustainability in the medium and long term, enjoying several benefits:

- ❖ Preferential access to ENA's training activities
- ❖ Free access to Congresses, Seminars, Debates, Meetings and Workshops promoted by ENA
- ❖ Priority and special conditions for the use of the following services:
 - Conception, design and implementation of research and innovation projects
 - Energy diagnosis, audits and certification
 - Project implementation and monitoring
 - Free support from international experts
- ❖ Support in the elaboration of specialized contents in the areas of environment and energy

- ❖ Access to a wide range of information in the field of environment and energy:
 - Updated agenda of events
 - Activities developed by different associations, clusters and networks (IEA, IEEA, EACI, EEA, ADENE and RNAE), other national and international agencies and entities
 - Case studies.
- ❖ Access to a wide range of information made available by more than 300 European energy agencies as well as entities that support them
- ❖ Contact relevant entities, in Portugal and worldwide, in the scope of environment and energy
- ❖ Possibility of associating ENA's image to the member's activities
- ❖ Become part of a group that shares not only energy and environmental concerns, but also strategies for their resolution.

RIGHTS OF OUR ASSOCIATES

- ❖ Participate in the constitution and functioning of the Agency, being able to elect and to be elected to the Statutory Bodies (Effective Associates)
- ❖ Participate in the General Assembly meetings and benefit from all the initiatives and advantages created by the Agency, under the terms established in the Statutes
- ❖ Request information from the Statutory Bodies and make recommendations for a better achievement of the Agency's specific purposes
- ❖ Request for Extraordinary General Meetings, under the terms established in the Statutes

TYPES OF ASSOCIATES

The Statutes of ENA (Chapter II, Art. 5) include the following associates' categories:

- ❖ Effective Associates - Natural or legal entities with activities, responsibilities or interests in the areas that comprise the Agency's purposes, with full active and passive electoral capacity, including the Agency's Founding Members.
- ❖ Auxiliary Associates - Environmental associations, universities, foundations, economic agents and their associations, interested in the Agency's purposes.
- ❖ Honorary Associates - Relevant individuals or institutions with significant contributions to the energy and environmental sustainability of ENA's territory.

MEMBERSHIP FEES

Becoming ENA's associated member implies the payment of a monthly fee (or more advantageous periodicity):

- ❖ Effective Associates:
 - Founding Members – 100,00€
 - Legal Collective Entity – 100,00€
 - Natural Person – 30,00€Year / 2,50€ Month
- ❖ Auxiliary Associates: 100,00€
- ❖ Honorary Associates: Exempt

OUR ASSOCIATES

Collective Members

Município
Palmela



SETUBAL
MUNICÍPIO PARTICIPADO

SESIMBRA



IPS Instituto
Politécnico de Setúbal



TST
TRANSPORTES
SUL DO TEJO



edp distribuição



AMARSUL




blueotter
Sustainable tomorrow



fertagus

aicep Global Parques



FEP SET
FUNDAÇÃO ESCOLA PROFISSIONAL DE SETÚBAL

Individual Members

Ana Bela de Sousa Delicado Teixeira

José Henrique Peralta Polido

José Luis Martins Mendes

Maria Cristina de Araújo Torres Daniel

Manuel Joaquim Pisco Lopes

Sérgio Manuel Nobre Marcelino

Jerónimo Fragoso Lopes

Vitor Ribeiro

Fernanda Manuela de Almeida Pésinho



ENA

AGÊNCIA DE ENERGIA E AMBIENTE
DA ARRÁBIDA

Let's unite our energies!



www.ena.com.pt